

IDS Scheer AG

Information Architecture with ARIS

ver 1.31

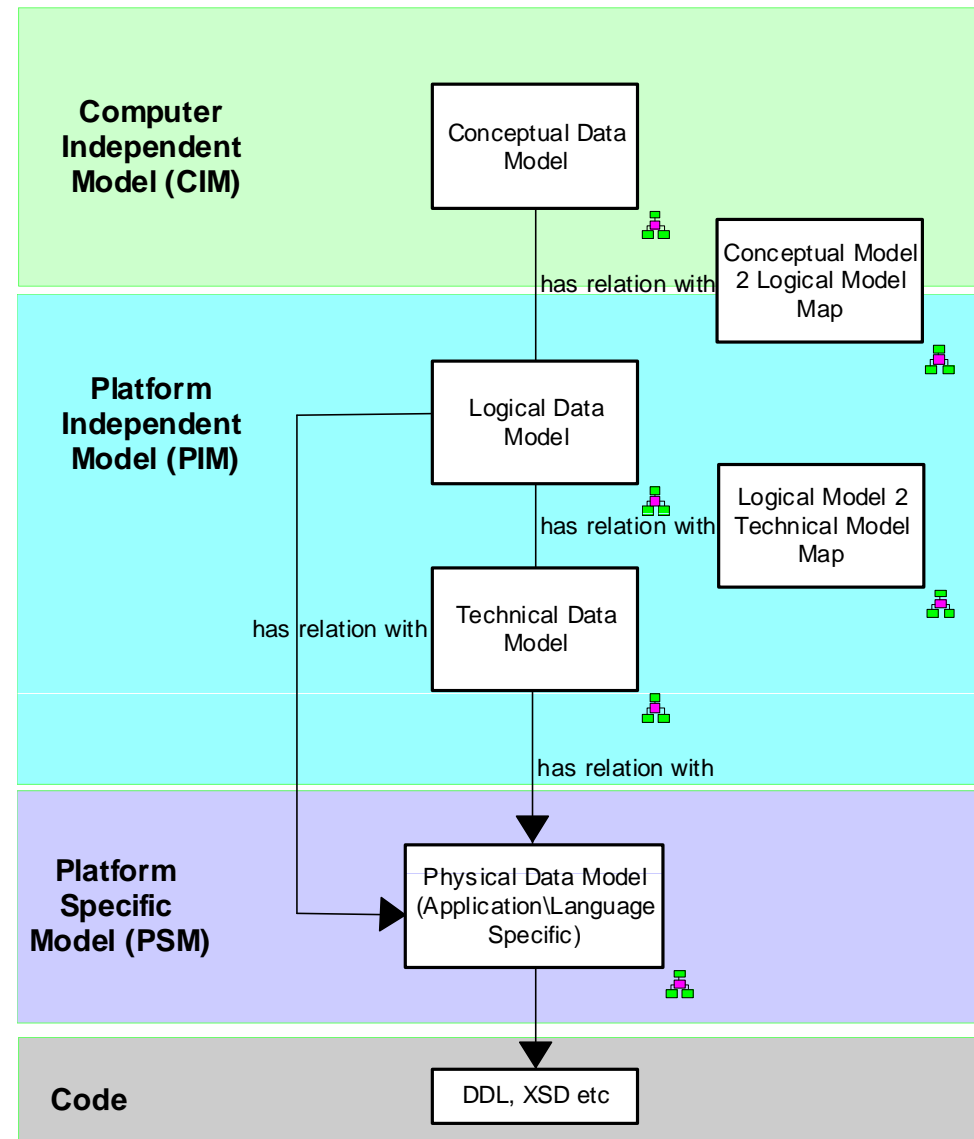
www.ids-scheer.com

Enterprise Information Architecture with ARIS

- Layered according to Model Driven Architecture of OMG
- Content as ARIS Database:

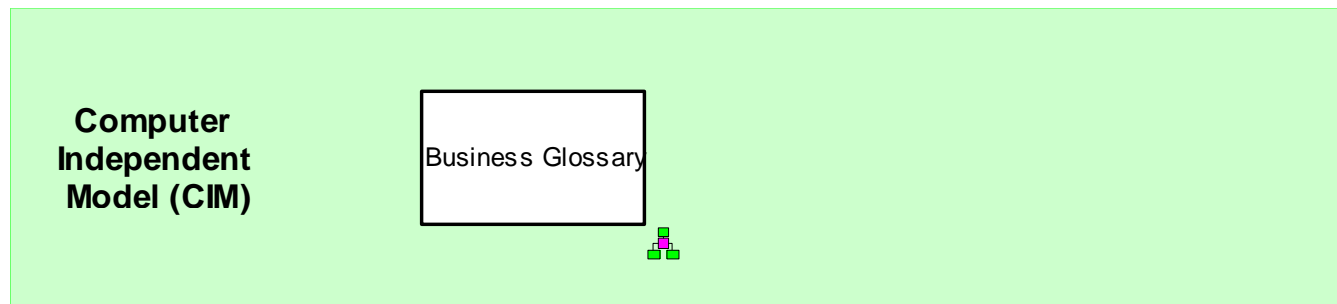


Paket

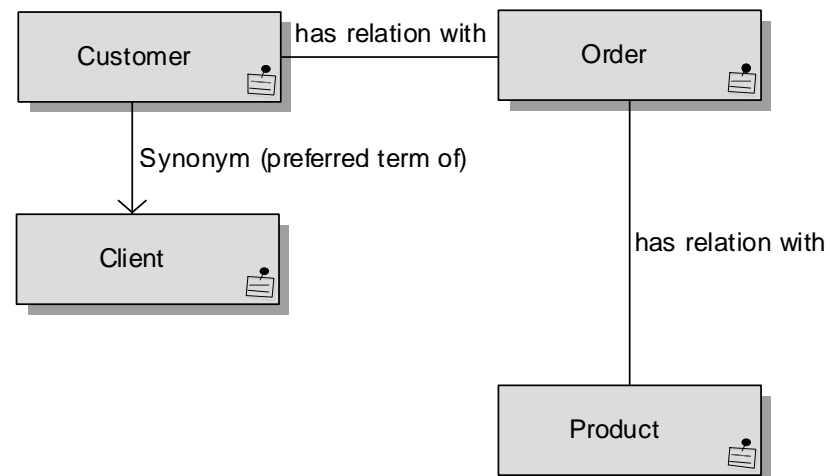


Business Glossary\Business Information Model at CIM

- **Why?** To establish a single business language about information objects used in company across different business units
- **Who?** Enterprise Information Architect
- **How?**

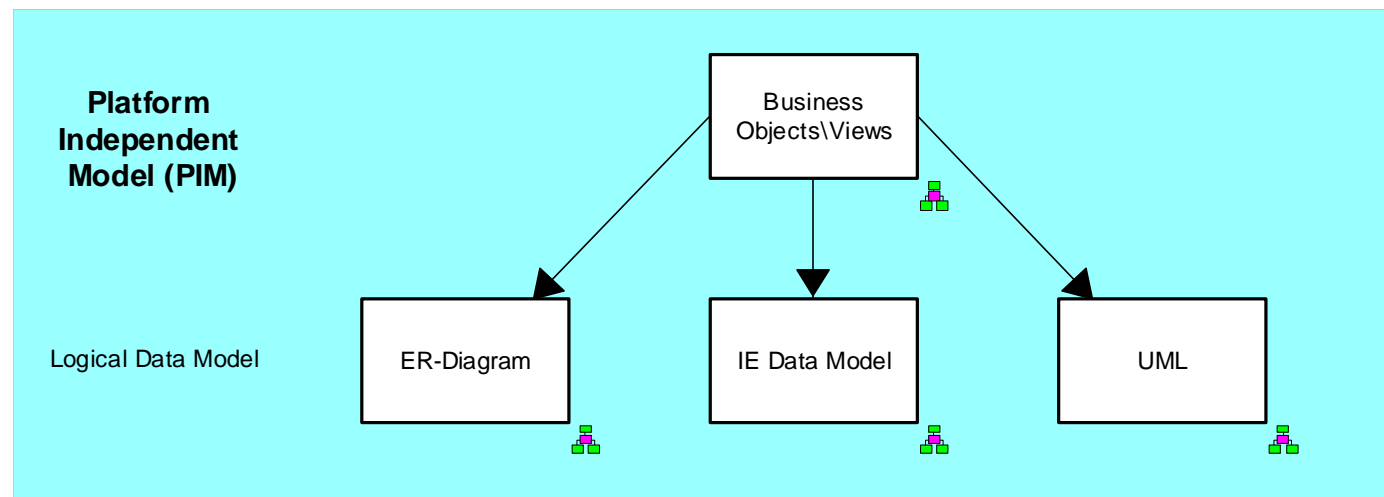


Type: Technical terms model



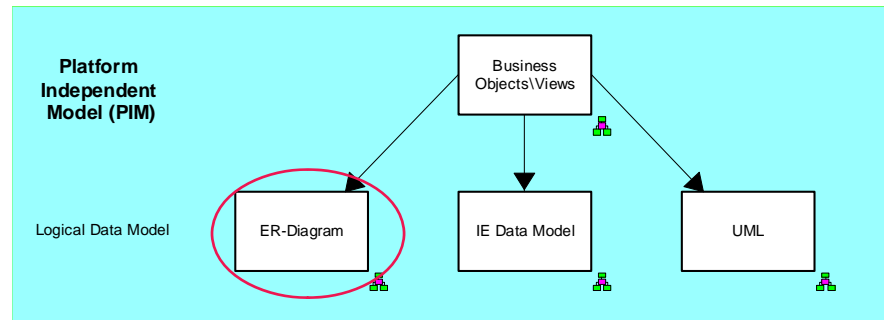
Logical Data Model at PIM

- **Why?** To analyse a usage of data by processes and applications of company in order to provide impact analysis, business intelligence, process automation, architecture optimization etc.
- **Who?** Enterprise Data Architects
- **How?**



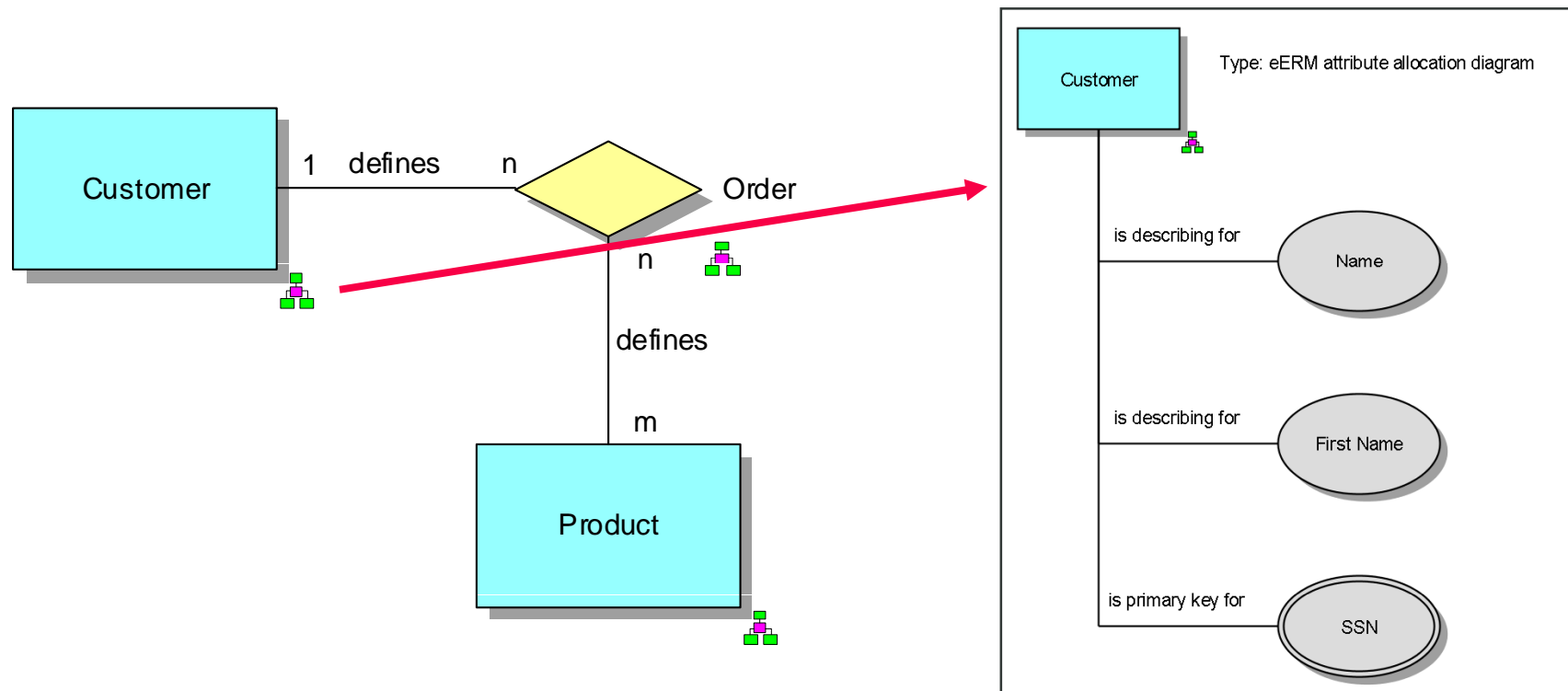
Logical Data Model as ERM Diagram

■ How?



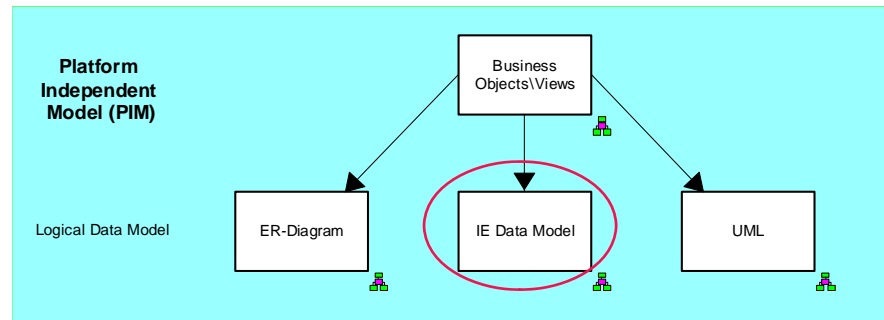
→ Assignment
..... Occurrence Copy

Type: eERM



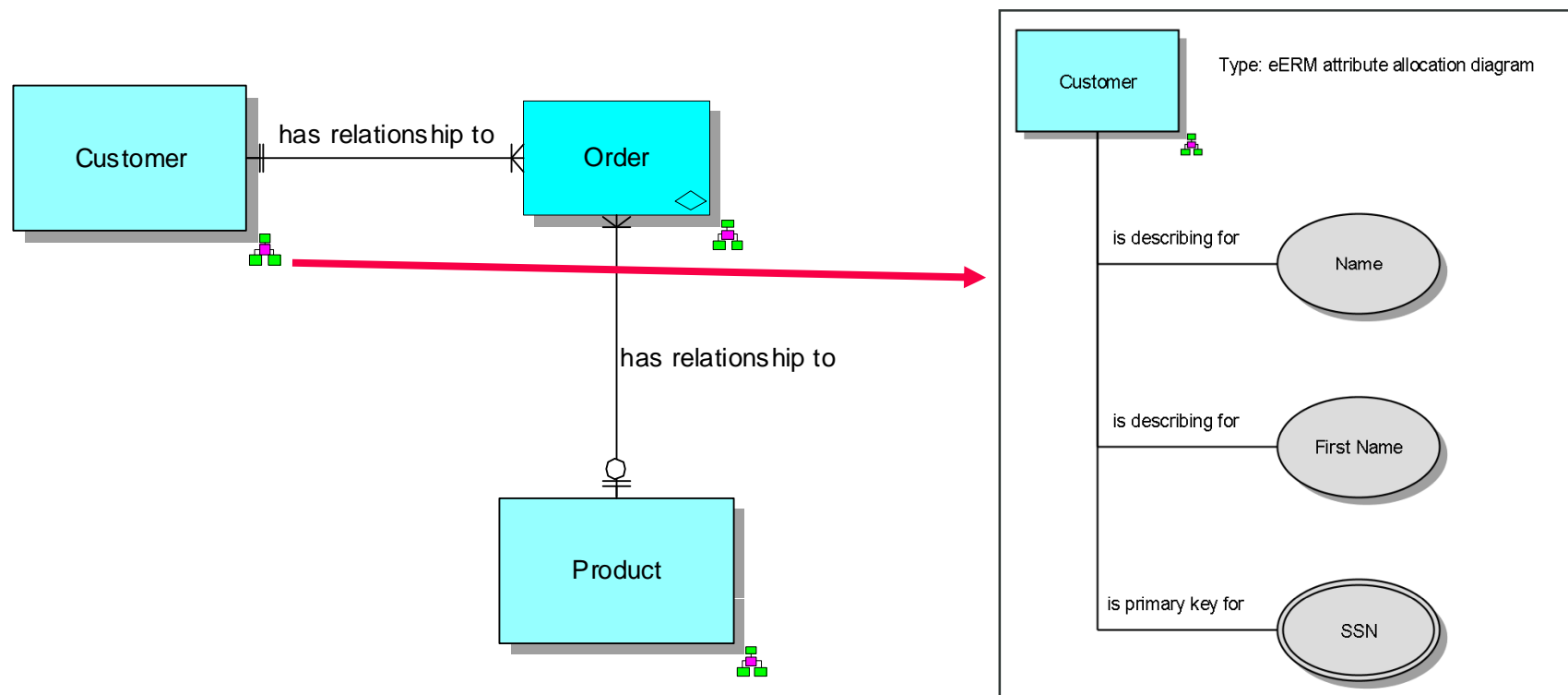
Logical Data Model as IE Data Model

■ How?



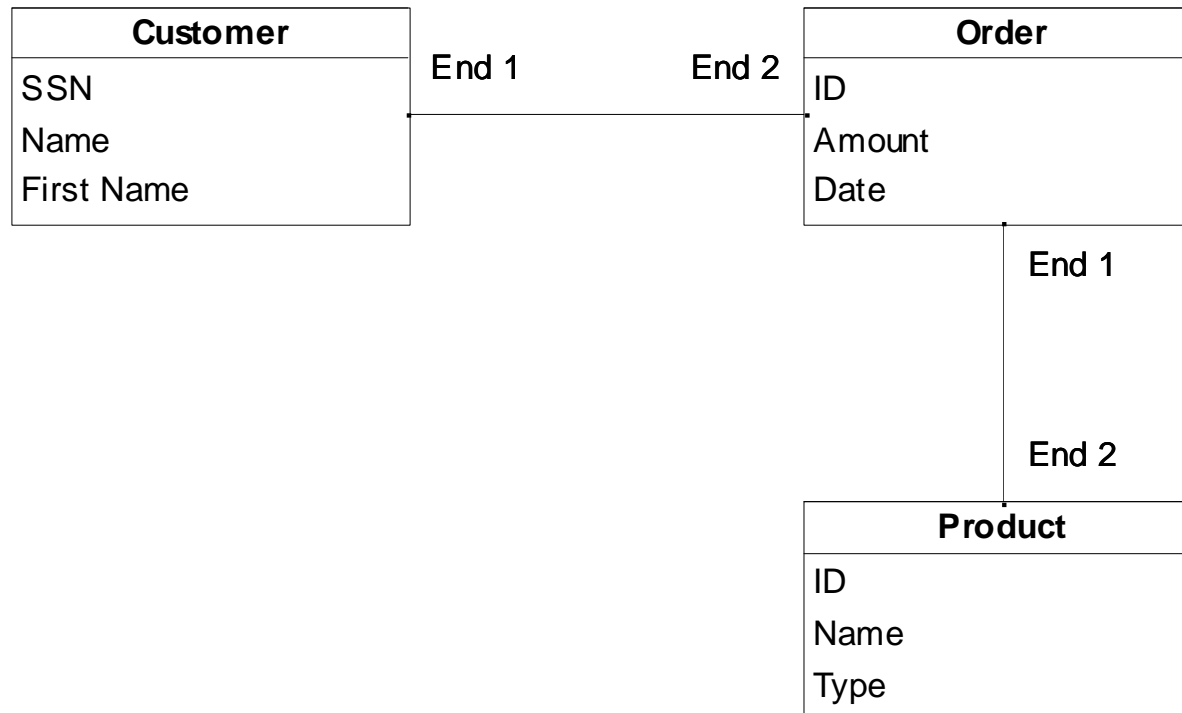
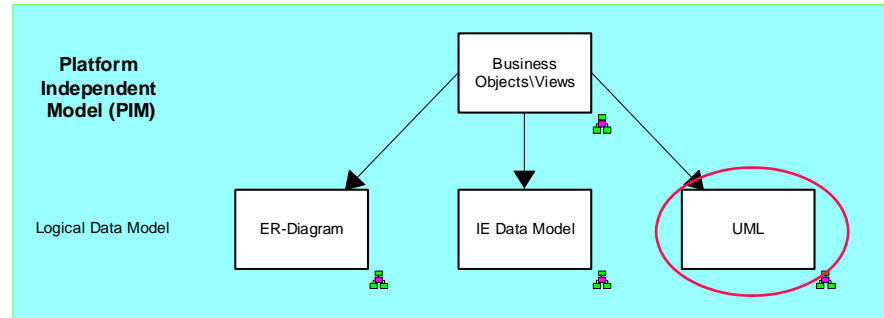
→ Assignment
..... Occurrence Copy

Type: IE Data model



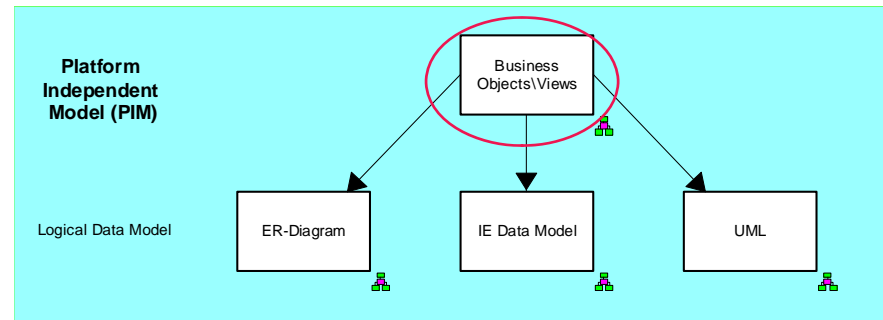
Logical Data Model as UML Class Diagram

■ How?



Business Objects as Views on parts of Logical Data Model

■ How?

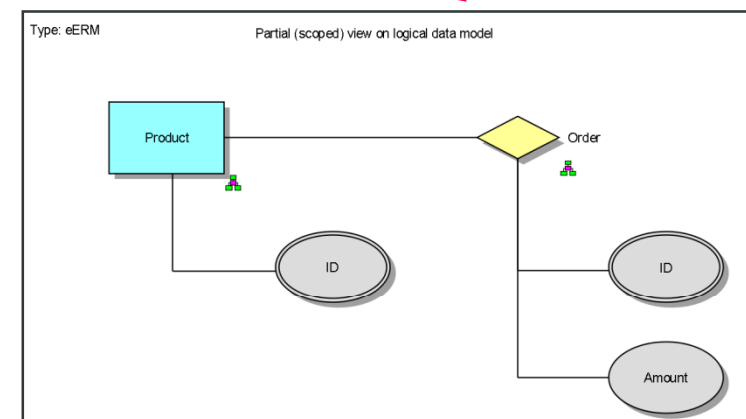
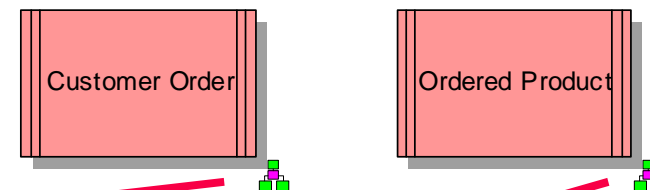
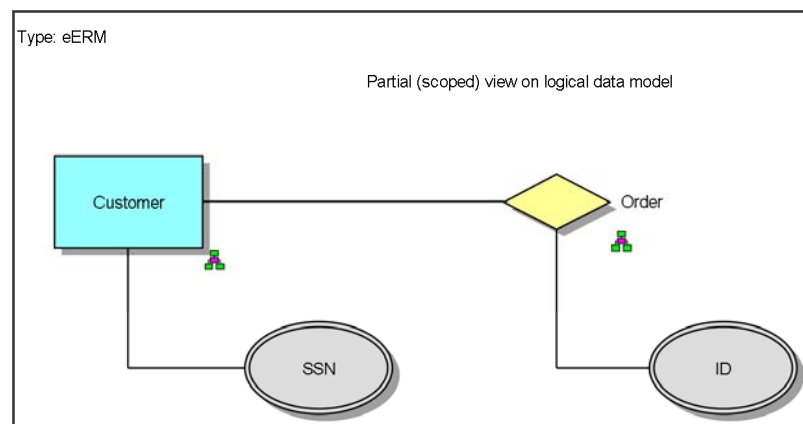


→ Assignment
..... Occurrence Copy

Type: eERM

Library of Business Objects is used in Business and Application Architectures to describe input/output, ownership etc

Describes Business Objects as partial (scoped) views on Logical Data Mode



Mapping of Business Information Model to LDM and Business Objects

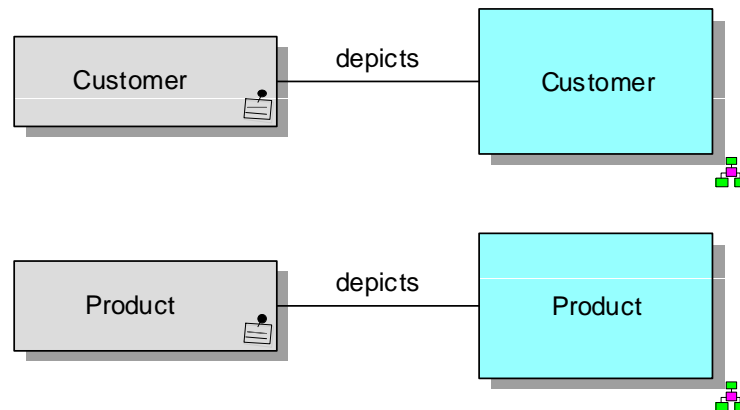
- Why? Traceability for top-down and bottom-up approaches
- Who? Enterprise Data Architects
- How?

Mapping to Logical Data Model

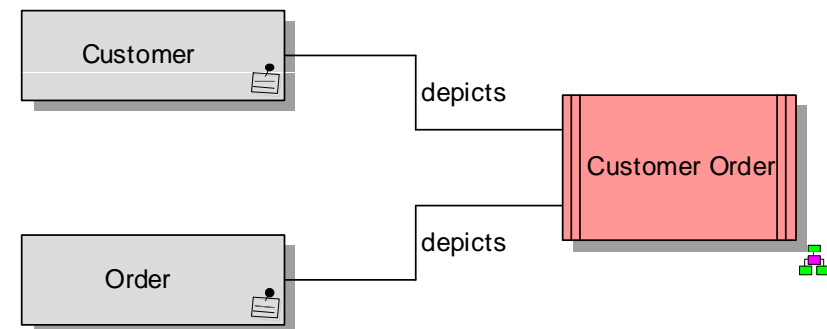
Type: Technical terms model

Describes a relation between Conceptual Data Model and Logical Data Model

With 7.1 can be replaced with matrix

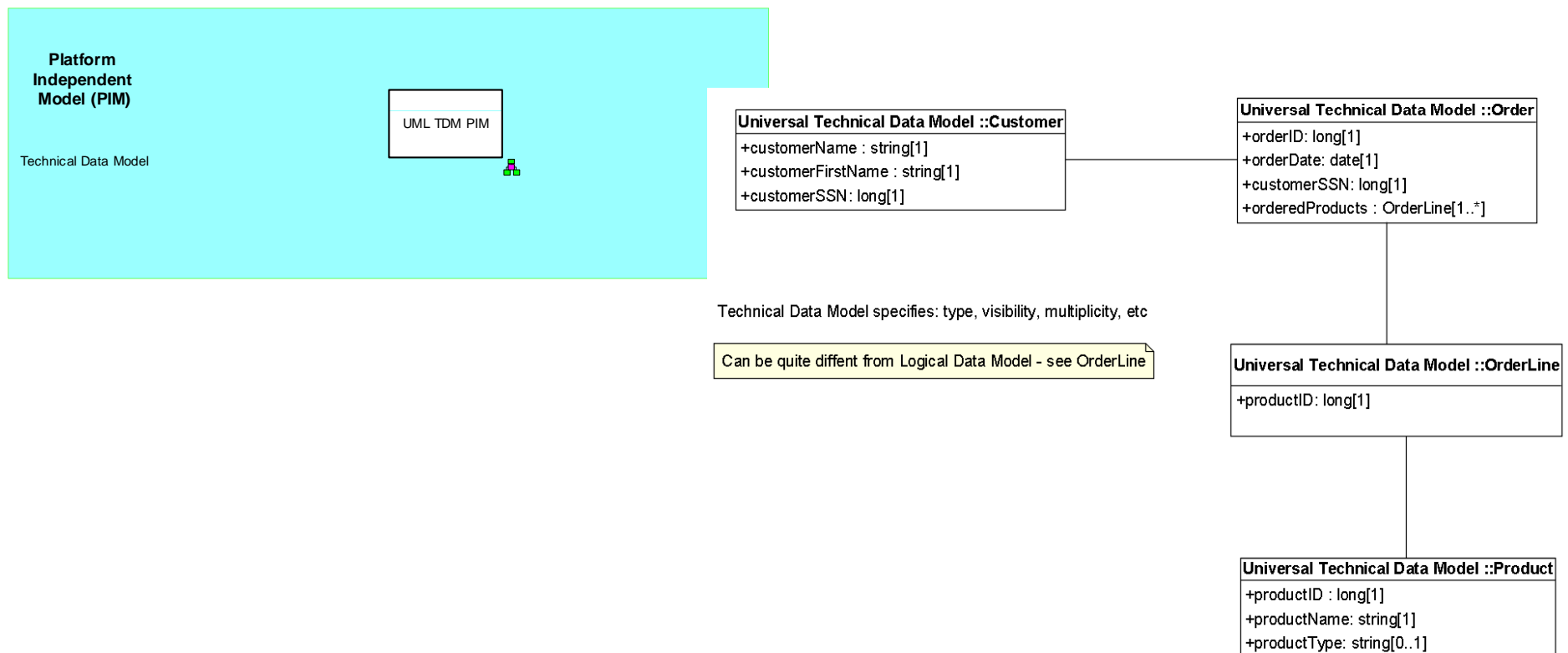


Mapping to Business Objects



Technical Data Model at PIM

- Why? To establish a core language for information bus\hub (ESB), provide a basis for solid enterprise SOA, simply platform and language independent application and datawarehouse development
- Who? Data Architect, Data Designer
- How?



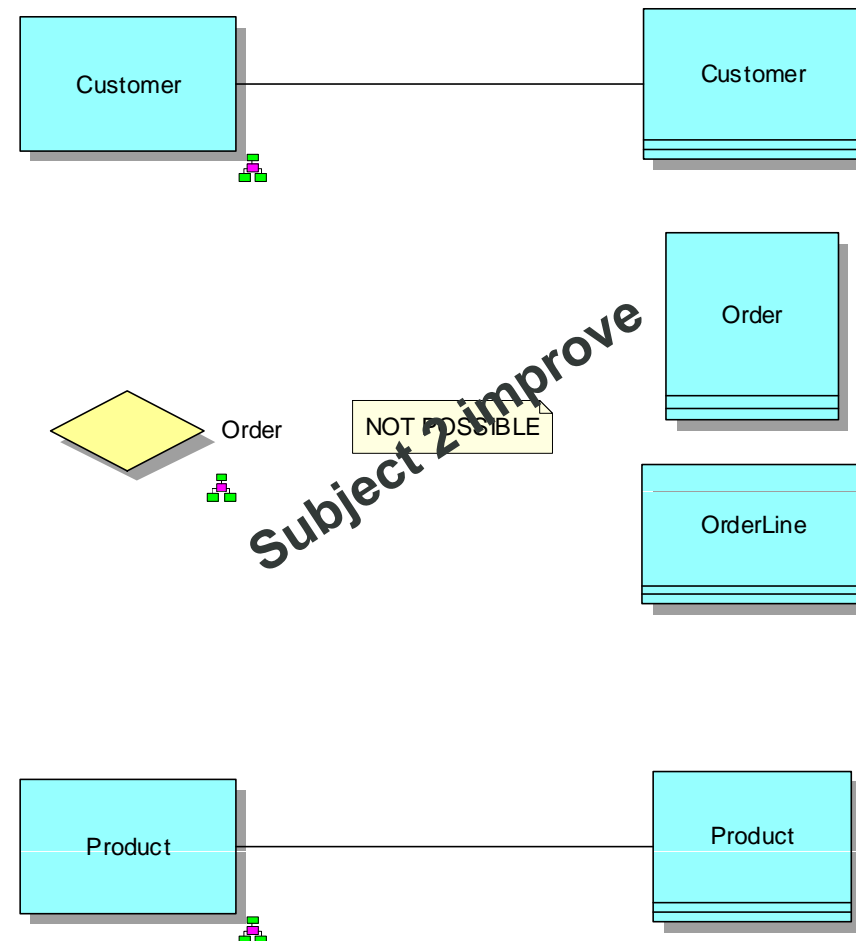
Mapping of Logical Data Model to Technical Data Model

Type: Class diagram

Describes a map between Logical Data Model and Technical Data Model

With 7.1 can be replaced with matrix

- Why? Traceability for top-down and bottom-up approaches
- Who? Data Architects
- How?



XML Schema Definition\Physical Database Schema at PSM

- Why? To enable model-driven design for services, application, database and datawarehouse implementation or reverse engineering
- Who? Data Architect, Data Designer
- How?

